



Caledonian

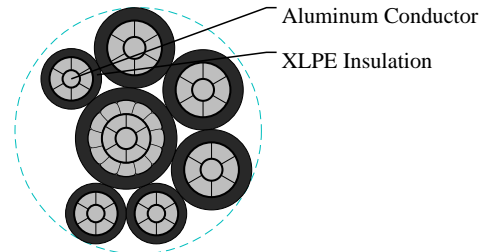
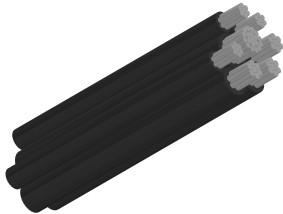
Aluminium Conductor Cables

www.caledonian-cables.com

marketing@caledonian-cables.com

LV Aerial Bundled Conductor (ABC) Cables

1C54.6+3C25+3C16 RM



APPLICATIONS

Aerial Bundle Cable (ABC cable) is a very innovative concept for overhead power distribution as compared to the conventional bare conductor overhead distribution system. It provides a higher level of safety and reliability, lower power losses and ultimate system economy by reducing installation, maintenance and operative cost. Caledonian LV Aerial Bundle Cables are designed to supply 600/1000 volt aerial service for temporary service at construction sites, as a service drop (power pole to service entrance), as a secondary cable (pole to pole) or street lighting. This over-head cable provides reinforced insulation acc. IEC 61140 and fulfill therefore Class II acc. IEC 61140. It is not flame retardant. But this could be if requested change to a flame retardant cable.

STANDARDS

NFC 33-209

CABLE CONSTRUCTION

Conductor: Aluminium conductor, round stranded compressed (RM).

Insulation: XPLE compound, UV-resistant.

Core identification: 1, 2 resp. 3 raised longitudinal ribs on the surface of the cores. The surface of the neutral core should have at least 12 ribs for cross-sections up to 50 mm² and a minimum of 16 ribs for cores above 50 mm². In the case of five core bundles the surface of the protective core should be smooth.

Electrical Properties

Rated voltage: 0.6/1 kV

Test voltage: 4 Veff kV

Minimum laying temperature: -20 °C

Operating temperature: -40 °C ~ +90 °C

Maximum short-circuit temperature: 250 °C

Maximum conductor temperature: 80 °C

Minimum bending radius (min.): 18×OD

DIMENSION AND PARAMETERS



Caledonian

Aluminium Conductor Cables

www.caledonian-cables.com

marketing@caledonian-cables.com

No. of Cores × Cross- sectional Area	Approx. Overall Diameter	Cable Weight	max. conductor resistance	min. breaking load of conductor strand	Current Rating
No.×mm ²	mm	kg/km	Ω/km	kN	A
1x54.6 RM+3x25 RM+3x16 RM	31.1	705	0.63/1.2/1.9103	3.8/2.3	107/72